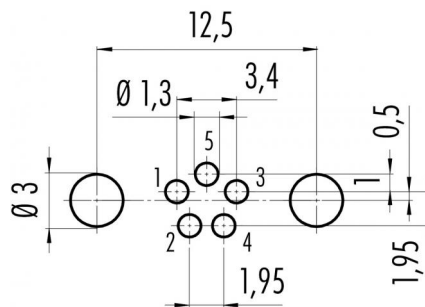


Product description	M8 female panel mount connector, Contacts: 5, shieldable, with shield plate, dip-solder, IP67, M10x0.75, front mounting
Area	M8 series 718
Order number	86 6618 1121 00005

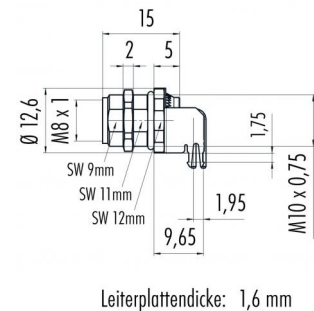
Illustration



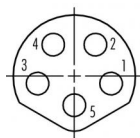
Conductor layout



Scale drawing



Contact arrangement (Plug-in side)



	X	Y
1	1,7	-0,35
2	0,975	1,45
3	-1,7	-0,35
4	-0,975	1,45
5	0	-1,35

- 1 grey
- 2 red
- 3 black
- 4 white
- 5 blue

You can find the assembly instructions on the next page.

Technical data

General values

Notice

Please note that, due to the change from the old to the new order number, there may be deviations in the technical specifications. For questions about product details, please use the 'Contact Customer Service' form on the right.
female panel mount connector
screw
dip-solder
85 °C
- 40 °C
85369010
20

Connector design
Connector locking system
Termination
Upper limit temperature
Lower limit temperature
Customs tariff number
Packaging Unit

Electrical values

Rated current (40 °C)	3 A
Rated voltage	60 V
Rated impulse voltage	1500 V
Pollution degree	3
Overvoltage category	II
Insulating material group	II
EMC compliance	shieldable, with shield plate
Degree of protection	IP67
Mechanical operation	> 100 Mating cycles

Product description	M8 female panel mount connector, Contacts: 5, shieldable, with shield plate, dip-solder, IP67, M10x0.75, front mounting
Area	M8 series 718
Order number	86 6618 1121 00005

Technical data

Material

Contact material	CuSn (bronze)
Contact plating	Au (gold)
Contact body material	PA
Housing material	Zinc die-cast nickel-plated
REACH SVHC	CAS 80-05-7 (4,4'-isopropylidendiphenol) CAS 7439-92-1 (Lead) CAS 61788-32-7 (Terphenyl, hydrogenated)

Product description

M8 female panel mount connector, Contacts: 5, shieldable, with shield plate, dip-solder, IP67, M10x0.75, front mounting

Area

M8 series 718

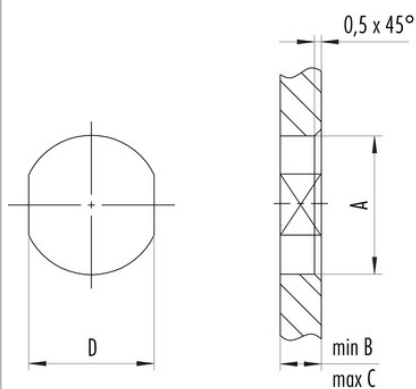
Order number

86 6618 1121 00005

Assembly instructions / Panel cut-out

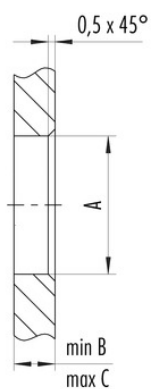
1. Einbauvorschlag

Mit Fläche als Verdrehschutz



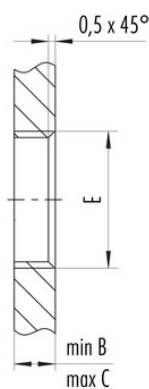
2. Einbauvorschlag

Mit Durchgangsbohrung



3. Einbauvorschlag

Mit Gewinde, einschraubbar



Gewinde E	A	B	C	D
M8 x 1	8,1	2,0	3,5	7,1
M10 x 0,75	10,1	2,0	6,5	9,1
M12 x 1	12,1	2,5	4,5	10,0

Anzugsdrehmoment 1 Nm

Product description	M8 female panel mount connector, Contacts: 5, shieldable, with shield plate, dip-solder, IP67, M10x0.75, front mounting
Area	M8 series 718
Order number	86 6618 1121 00005

Security notices

The connectors are designed for use in plant, control system and electrical equipment. The end user is responsible for checking whether the connectors are suitable for use in other applications.

Connectors with degree of protection IP 67 and IP 68 are not suitable for use under water. When used outdoors, the connectors must be separately protected against corrosion. For further information about IP degrees of protection refer to 'Technical support' in the Download Centre.